

# User manual

(NOTEBOOK MCC)



## Foreword

### **Safety warning:**

To avoid the risk of fire, electric shock, and personal injury, follow these basic safety precautions when using this computer, including the following:

1. Read these instructions carefully before using the computer;
2. Place the computer on a stable surface before setting it up;
3. Keep the computer away from high temperatures, humidity and dust;
4. Do not hit or drop the computer to avoid damage;
5. Do not spill any liquid on the computer to avoid damage to the computer or cause burning;
6. Do not block the vents of the computer or other open slots;
7. If you do not use the computer for a long time, please unplug the plug;
8. Do not disassemble the computer yourself. For safety reasons, please operate it by a professional.

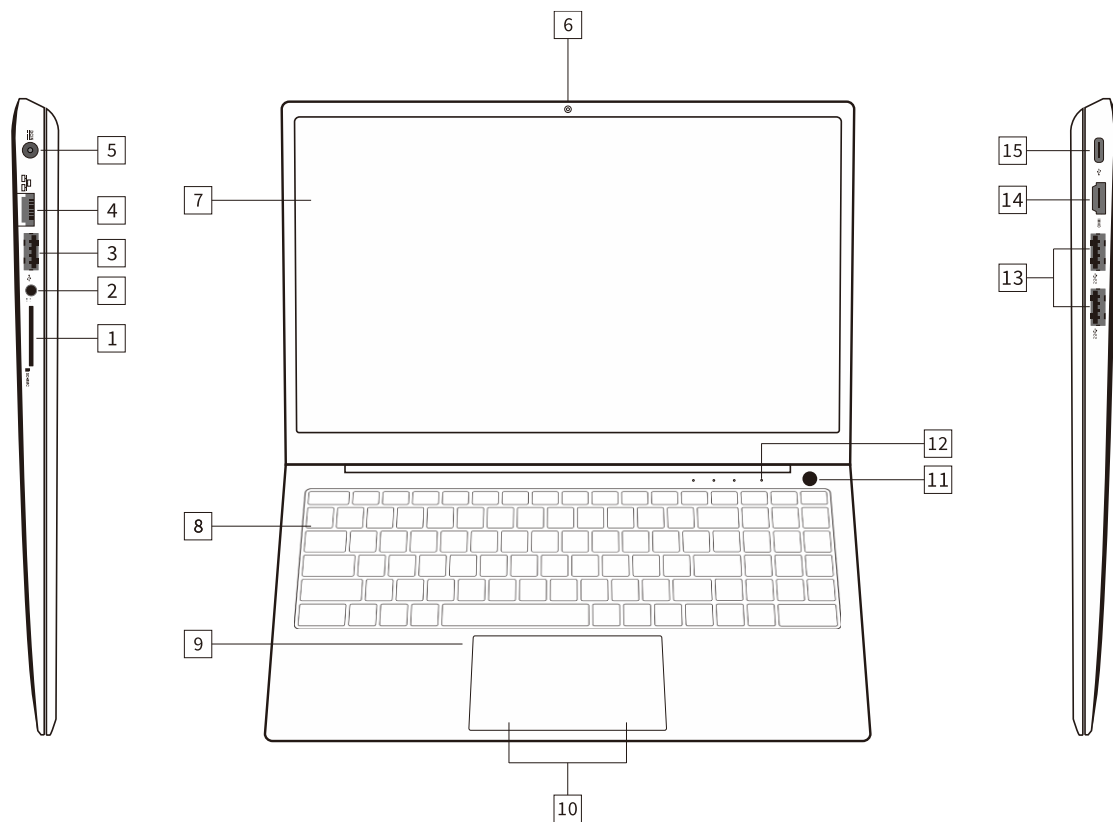
# Chapter 1 Know Your Computer

## 1.1 Packing List

When receiving the notebook, please open the package and carefully remove the product. If there is any omission or damage, please contact the supplier immediately.

## 1.2 Interface Description

### Screen view

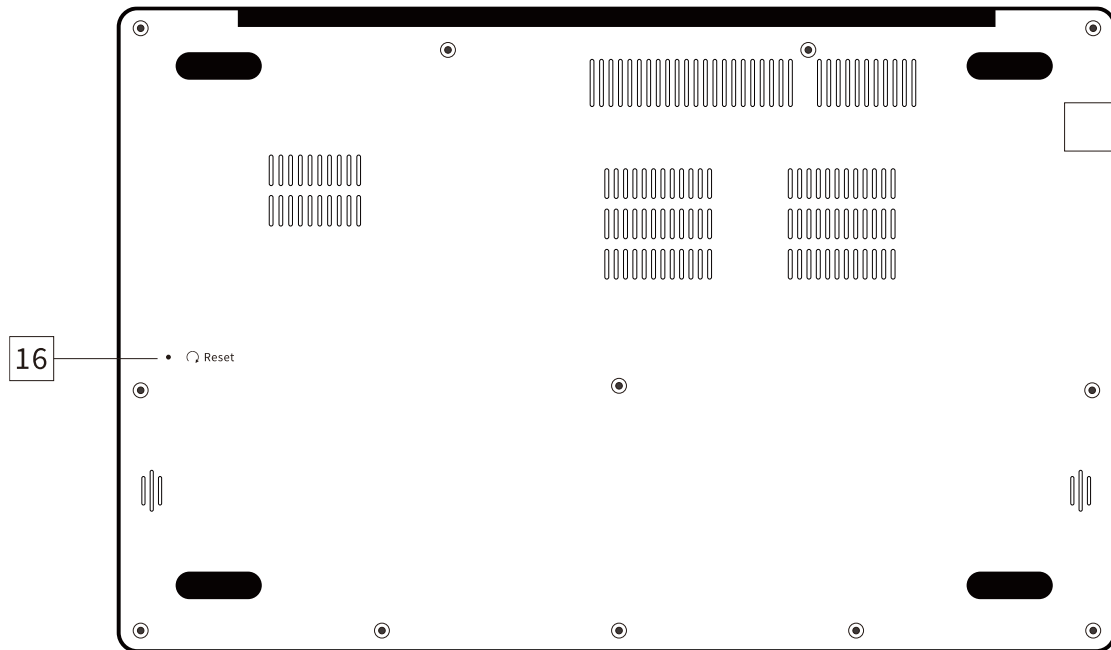


#	Item	Description
1	SD card slot	Insert SD memory card
2	Audio jack	Connects to headphone
3	USB 2.0	Connects to USB devices.
4	LAN	Connects to network

5	Charger connector	Connects to an AC adapter.
6	Camera & MIC	Web Camera for Video communication.  Digital MIC for Talking communication
7	Display Panel	High-definition Displays computer output
8	Keyboard	Backlight Keyboard, For entering data into your computer.
9	Touchpad	Touch-sensitive pointing device.  The touchpad and selection buttons form a single surface.
10	Touchpad buttons	Press down firmly on the touchpad surface to perform a left click.  Press down firmly on the lower right corner to perform a right click
11	Power	Turns the computer on and off.
12	LED	LED 1: Capital LED  LED 2: Hard Disk LED  LED 3: Power on LED
13	USB 3.0 Port	Connects to USB devices.
14	HDMI Connector	HDMI 1.4, Supports high-definition digital video connections.

15	Type-C	USB 3.1 function,Connects to USB devices.
16	Reset	

**Base view**



**Using the keyboard**

To activate hotkeys, press and hold the <Fn> key before pressing the other key in the hotkey combination.

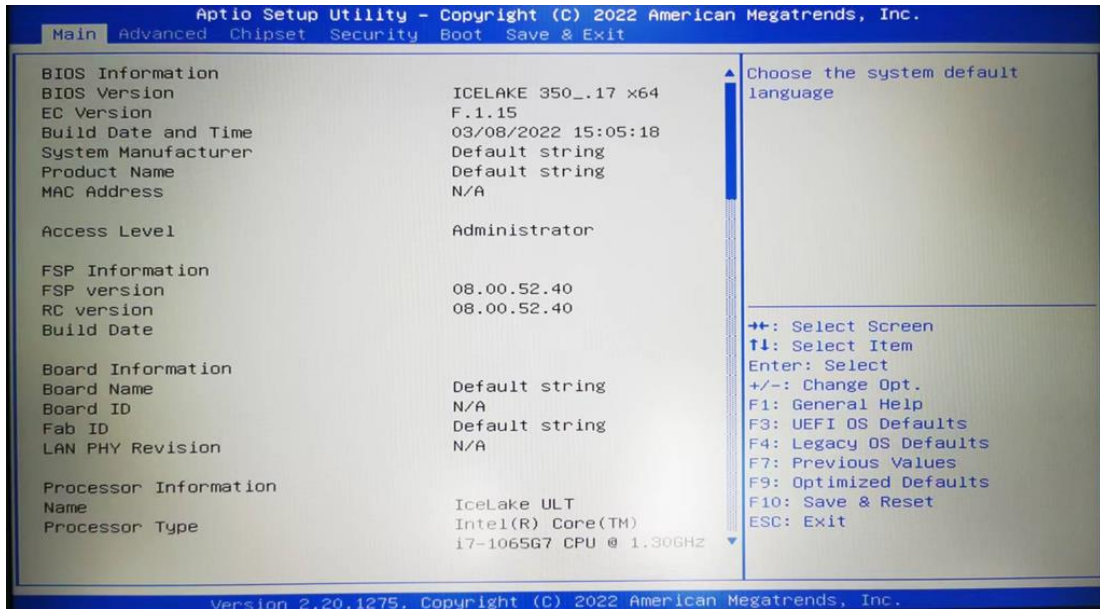
Hotkey	Function	Description
< Fn> + <Esc>	Sleep	Puts the computer in Sleep mode.
< Fn> + <F1>	Touchpad toggle	Turns the built-in touchpad on and off.
< Fn> + <F2>	Prt Scr	Copy the current full screen section
< Fn> + <F3>	WIFI toggle	Turns the WIFI on and off

< Fn> + <F4>	Volume toggle	Turns the Volume on and off
< Fn> + <F5>	Brightness Down	Decreases the Screen Brightness
< Fn> + <F6>	Brightness Up	Increases the Screen Brightness
< Fn> + <F7>	Display toggle	Switches display output between the display screen, external monitor (if connected) and both.
<Fn> + <F8>	Display off	Turns the display screen backlight off to save power. Press any key to return
< Fn> + < F9>	Open Browser	Open built-in browser
< Fn> + < F10>	Keyboard backlight	Turns the keyboard backlight on and off
< Fn> + <F11>	Camera toggle	Enable/disable camera module
< Fn> + <F12>	Bluetooth Toggle	Turns the Bluetooth on or off
< Fn> + <↑>	Volume Up	Increases the sound volume
< Fn> + <↓>	Volume Down	Decreases the sound volume
< Fn> + <Del>	Scr Lk	Turns the scroll lock feather on or off

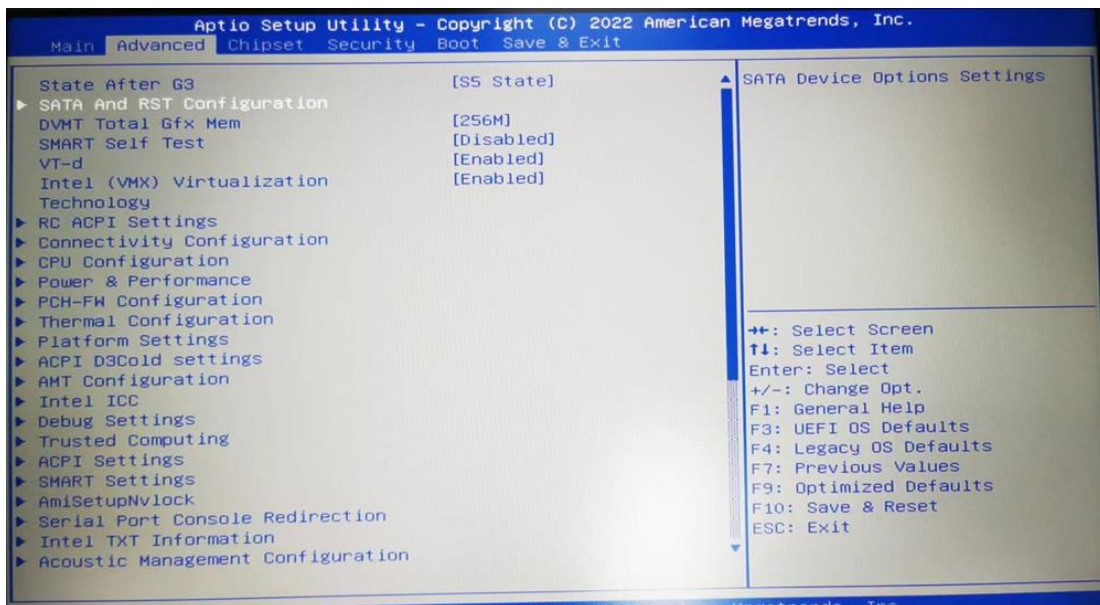
## Chapter 2 Know the Bios

### 2.1 Bios Setting

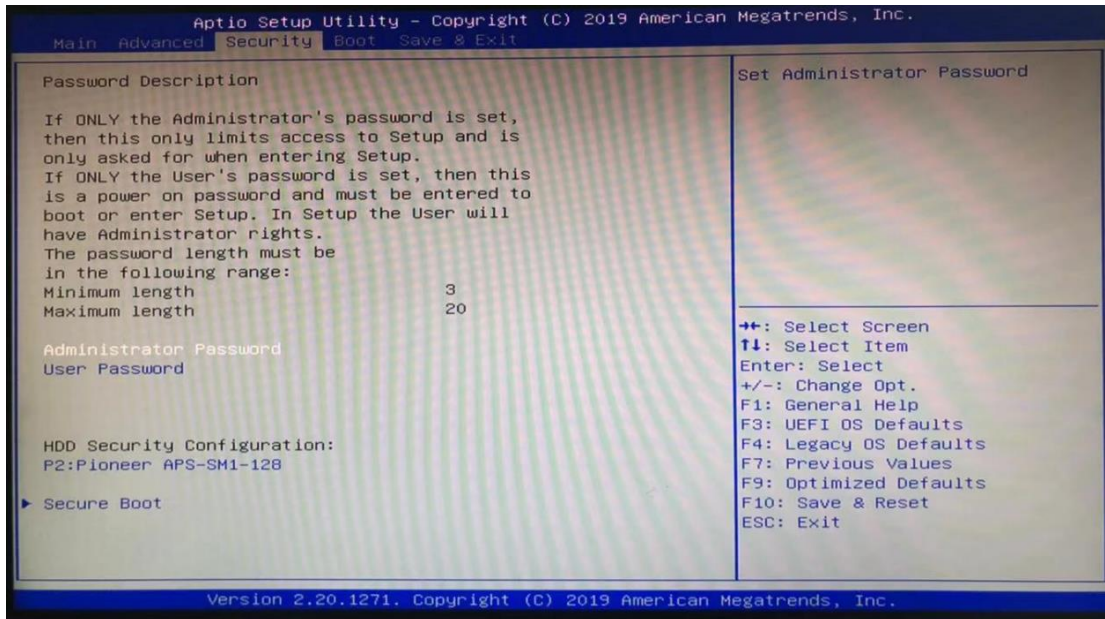
**Main menu:** Set the system time, date, and view related information, such as BIOS, EC version, CPU, memory, etc.



**Advanced menu:** The following advanced settings can be made, SATA mode selection: The hard disk working mode can be set.



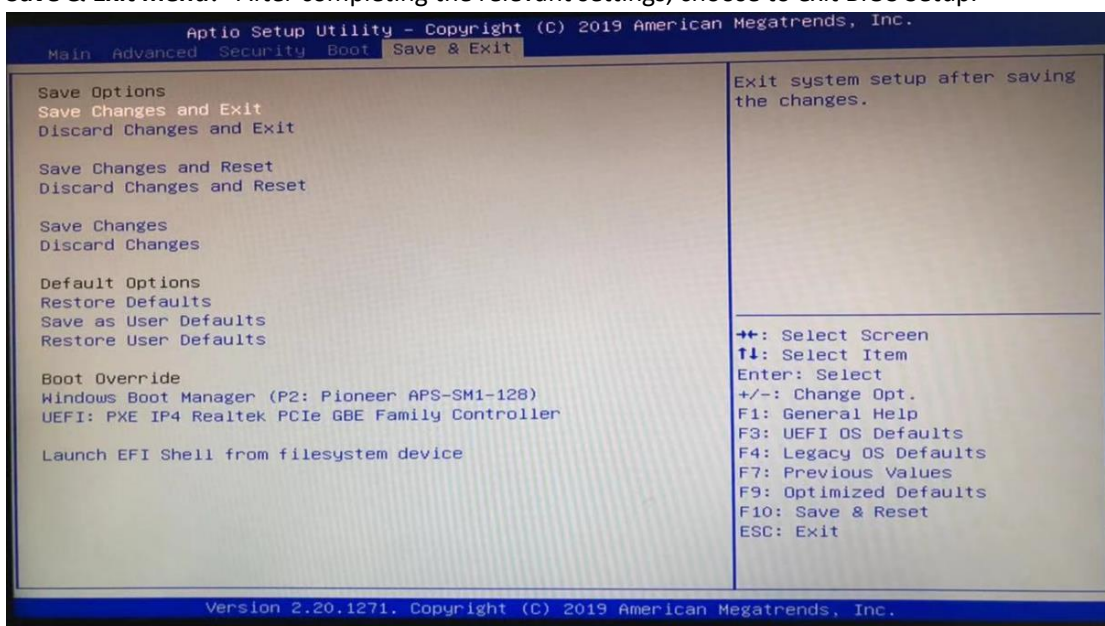
**Security menu:** You can enter the security settings of the system:



Administrator password	Set the password to enter the Setup menu
User password	Set the password to enter the Setup menu and machine startup
HDD Security Configuration	Set the hard disk protection password
Secure Boot	Secure Boot switch control sub-menu, this item should be Enabled when installing Windows 10 UEFI mode. When installing Legacy (non UEFI) system, such as DOS, Windows 8, this item should be Disabled, otherwise the system cannot be installed or booted.

**Note: Please remember the password you set, otherwise it will bring you unnecessary losses.**

**Save & Exit menu:** After completing the relevant settings, choose to exit BIOS Setup.





## Chapter 3 Simple Troubleshooting

No.	Fault phenomenon	Troubleshooting
1	Can not turn on	<ol style="list-style-type: none"> <li>1. Make sure that the AC adapter is connected to the computer and that the power cord is plugged into a working electrical outlet;</li> <li>2. The computer is turned on (press the power button again to confirm whether it is turned on normally);</li> <li>3. If the above items are set correctly, the computer still does not turn on, please contact the supplier in time.</li> </ol>
2	When the computer is turned on, the screen is not displayed	<ol style="list-style-type: none"> <li>1. Please check if the HDMI and DP lines are connected correctly.</li> <li>2. Check if the display input mode is correct.</li> </ol>
3	A black screen appears while the computer is running	<ol style="list-style-type: none"> <li>1. Check the status of the power indicator to confirm that the device is in sleep mode. Can you wake up by pressing the power button?</li> <li>2. Check if the monitor is sleeping</li> </ol>
4	The computer is not responding	<ol style="list-style-type: none"> <li>1. To force the shutdown, please press the power button and then turn it back on;</li> <li>2. Or unplug the power cord and reconnect it.</li> </ol>
5	No sound from the speaker or headphones	<ol style="list-style-type: none"> <li>1. Check if the mute function is off</li> <li>2. Did you choose a speaker or earphone as a playback device?-</li> </ol>